

EUROPEAN FINISHING EQUIPMENT Corp.

901 PENHORN AVE., UNIT #2

SECAUCUS, NJ 07094

PHONE (201) 210-2247 FAX (201) 210-2549

sales@histeam.com www.histeam.com

Operating & Safety Instructions

Model SVP-24 Mini Boiler with Iron

WHITE PLASTIC WRAPPER ON THE SIDE OF THE BOILER IS TO PROTECT THE BOILER DURING SHIPPING. PLEASE **PEEL OFF** THIS WRAPPER FROM BOTH SIDES OF THE BOILER BEFORE OPERATING THE BOILER.

Exclusive Distributor of



™ Brand Pressing Equipment

IMPORTANT SAFETY INSTRUCTIONS

MODEL SVP-24

FOR COMMERCIAL USE ONLY

READ ALL INSTRUCTIONS BEFORE USING

SPECIAL SAFETY INSTRUCTIONS

1. NEVER UNSCREW THE WATER CAP (WITH SAFETY VALVE) DURING USE (WHILE THE BOILER IS UNDER PRESSURE) as the pressurized steam can lead to scalds
2. UNSCREW THE WATER CAP ONLY AS INSTRUCTED IN OPERATING INSTRUCTIONS.
3. RISK OF FIRE – Turn off the boiler and iron switches and unplug the boiler when finished ironing.
4. To avoid a circuit overload, do not operate another high voltage appliance on the same circuit.

GENERAL SAFETY INSTRUCTIONS

1. Use iron/boiler only for its intended use.
2. To protect against a risk of electric shock, do not immerse the iron/boiler in water or other liquids.
3. The iron/boiler should always be turned “Off” before plugging or unplugging from outlet. Never yank cord to disconnect from outlet; instead, grasp plug and pull to disconnect.
4. Do not allow cord to touch hot surfaces. Let Boiler and iron cool completely before putting away.
5. Always disconnect appliance from electrical outlet when not in use.
6. Do not operate appliance with damaged cord or hose, or if the appliance has been damaged. To reduce the risk of electric shock, do not disassemble or attempt to repair the appliance. Take it to a qualified service person for examination and repair. Incorrect re-assembly or repair could cause a risk of fire, electric shock, or injury to persons when the appliance is used.
7. Close supervision is necessary for any appliance being used by or near children. Do not leave appliance unattended while iron is on ironing board.
8. Burns could occur from touching hot metal parts, hot water or steam. Use care when you turn a boiler upside down – there may be hot water in the reservoir.

SAVE THESE INSTRUCTIONS

OPERATING INSTRUCTIONS

MODEL SVP-24

A. PREPARING TO IRON

1. Take boiler out of box.
2. Place boiler on a sturdy work surface.
3. Insert cord supporter (Diagram A, Figure 1) into the hole provided at the top of the boiler. Insert iron cord and hose into loop on top of cord supporter.
4. Be sure the grey plug for iron (Diagram A, Figure 2) is connected to the grey receptacle (Diagram A, Figure 3). Be sure the black rubber steam hose is connected to the solenoid and tightened with the clamp (Diagram A, Figure 13).
5. Open the water cap (Diagram A, Figure 4) by pushing down and turning counterclockwise.
6. Fill the boiler with approximately 2 quarts (64 oz.) of tap water. Use the enclosed dipstick to accurately measure the correct water level. Do not fill past the "MAX" line. Do not overfill.
7. Close the water cap by pressing down and turning clockwise. Do not overtighten.
8. Plug boiler into grounded outlet of sufficient power (15 AMPS).
9. Turn on iron switch (Diagram A, Figure 5) and boiler switch (Diagram A, Figure 6). Both switches will light up.
10. Set thermostat knob on the iron (Diagram A, Figure 7) to desired temperature. These temperature settings are approximate. Always check temperature on a hidden part of garment. The setting for steam is " " or higher.
11. When the pressure gauge (Diagram A, Figure 8) reads approximately 40 PSI and the steam ready indicator lamp (Diagram A, Figure 9) lights up, you are ready to press. During ironing, this light will go on and off.

B. USING IRON/BOILER

12. To get steam, press the red thumb switch. (Diagram A, Figure 10)
13. The first time you press, point the iron away from the garment, in a safe direction, and press the red thumb switch on the iron to eliminate any condensate from the iron.
14. The volume of steam can be controlled by turning the flow control knob (Diagram A, Figure 11) (normal position is half-open).
15. When finished pressing, turn off the boiler and iron switches and unplug the boiler.

WHITE PLASTIC WRAPPER ON THE SIDE OF THE BOILER IS TO PROTECT THE BOILER DURING SHIPPING. PLEASE **PEEL OFF THIS WRAPPER FROM BOTH SIDES OF THE BOILER BEFORE OPERATING THE BOILER.**

C. REFILLING BOILER

To refill the boiler, make sure that the boiler is not under pressure.

IMPORTANT WARNING:

Before you open the water cap (with safety valve),
all remaining steam must be released (emptied) from the boiler.

(a) How to Release (empty) Steam from the Boiler

If you have used the iron within the previous two (2) hours, or if the boiler is still warm, all remaining steam must be released (emptied) before opening the water cap on the boiler (Diagram A, Figure 4).

- Press the iron switch (Diagram A, Figure 5) into “ON” position.
- Press the boiler switch (Diagram A, Figure 6) into “OFF” position.
- Hold down the red thumb switch on the iron (Diagram A, Figure 10) to release all remaining steam in the boiler until steam stops flowing from the iron. Check pressure gauge (Diagram A, Figure 8). It should read “0” PSI.
- Press the iron switch (Diagram A, Figure 5) into the “OFF” position.
- Unplug the boiler and allow it to cool.

(b) How to Refill the Boiler

- Make sure that both the iron switch (Diagram A, Figure 5) and boiler switch (Diagram A, Figure 6) are in the “off” position.
- Make sure that the boiler is unplugged.
- Make sure that any remaining steam in the boiler has been released through the iron as described in (a) above.
- Unscrew the water cap, turning the cap slightly counterclockwise, slowly. If any steam continues to escape, stop and release the steam through the iron as described in (a) above.
- If the boiler is empty, low-water indicator light (Diagram A, Figure 12) will light up. Slowly pour in approximately 2 quarts (64 oz.) of tap water.
- Since the boiler may not be completely empty, please use the dipstick provided to accurately measure the correct water level. Do not fill past the “MAX” line. Do not overfill.
- Replace the water cap by turning clockwise. DO NOT OVERTIGHTEN.

D. CLEANING AND MAINTENANCE

Once a month (or more frequently if you have hard water), before start of work when the boiler containing old water is cold and unpressurized, (1) shake the boiler (to loosen debris inside); (2) open the water cap and pour out old water; (3) rinse the boiler with fresh water, and (4) refill the boiler with fresh tap water. See Diagram B. You can use distilled water instead of cleaning the boiler,

Diagram A

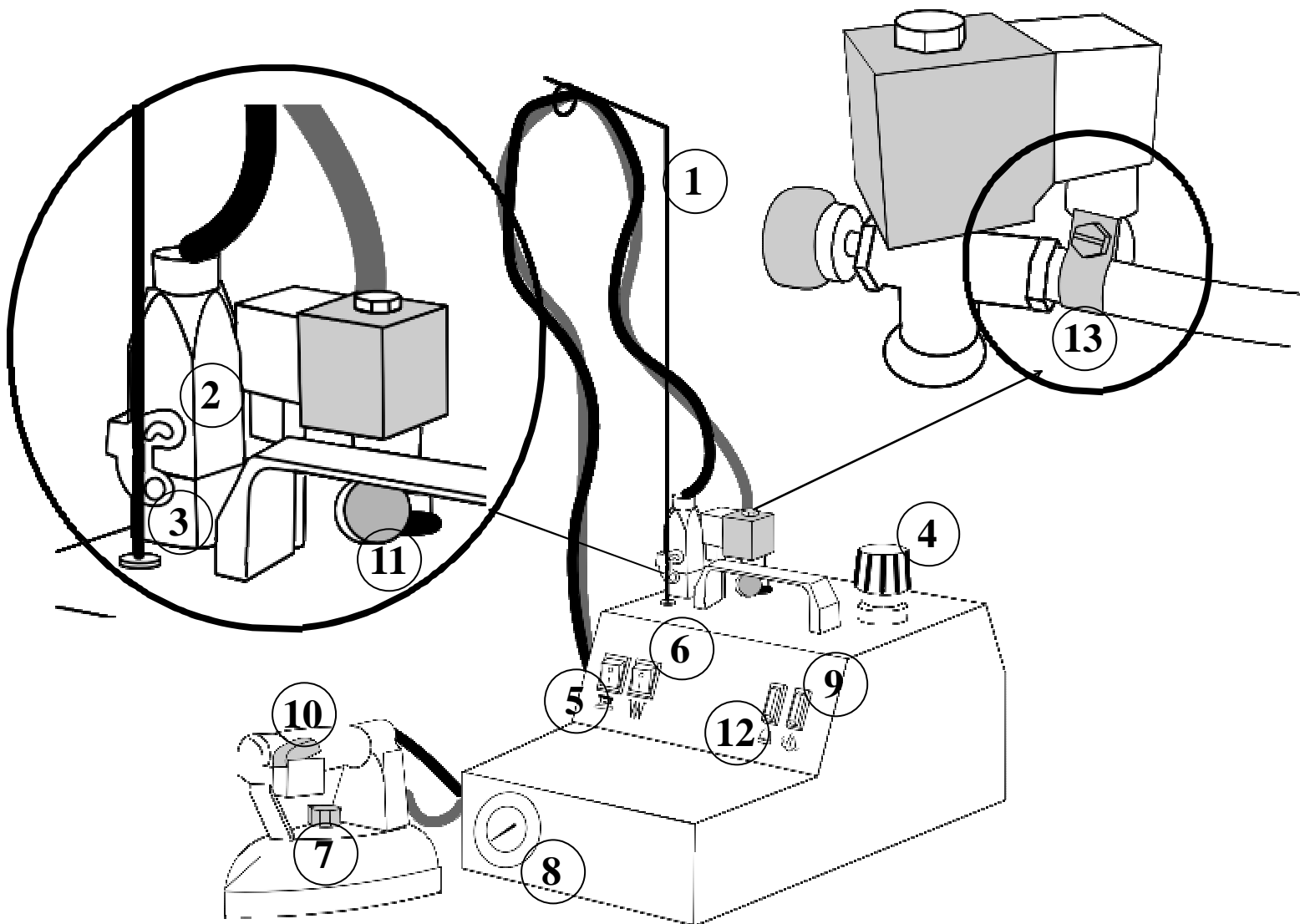
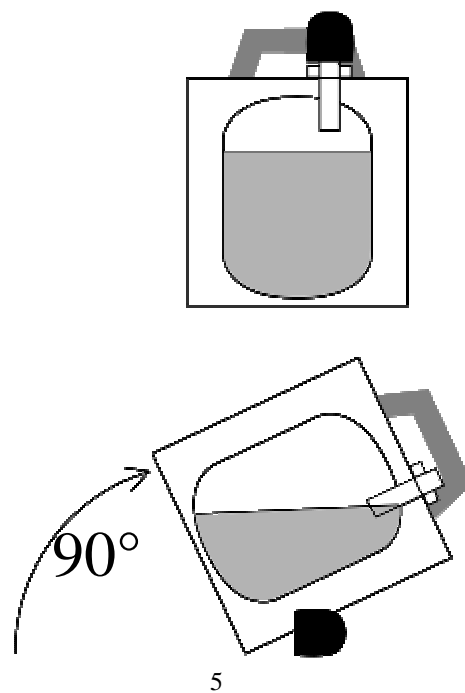
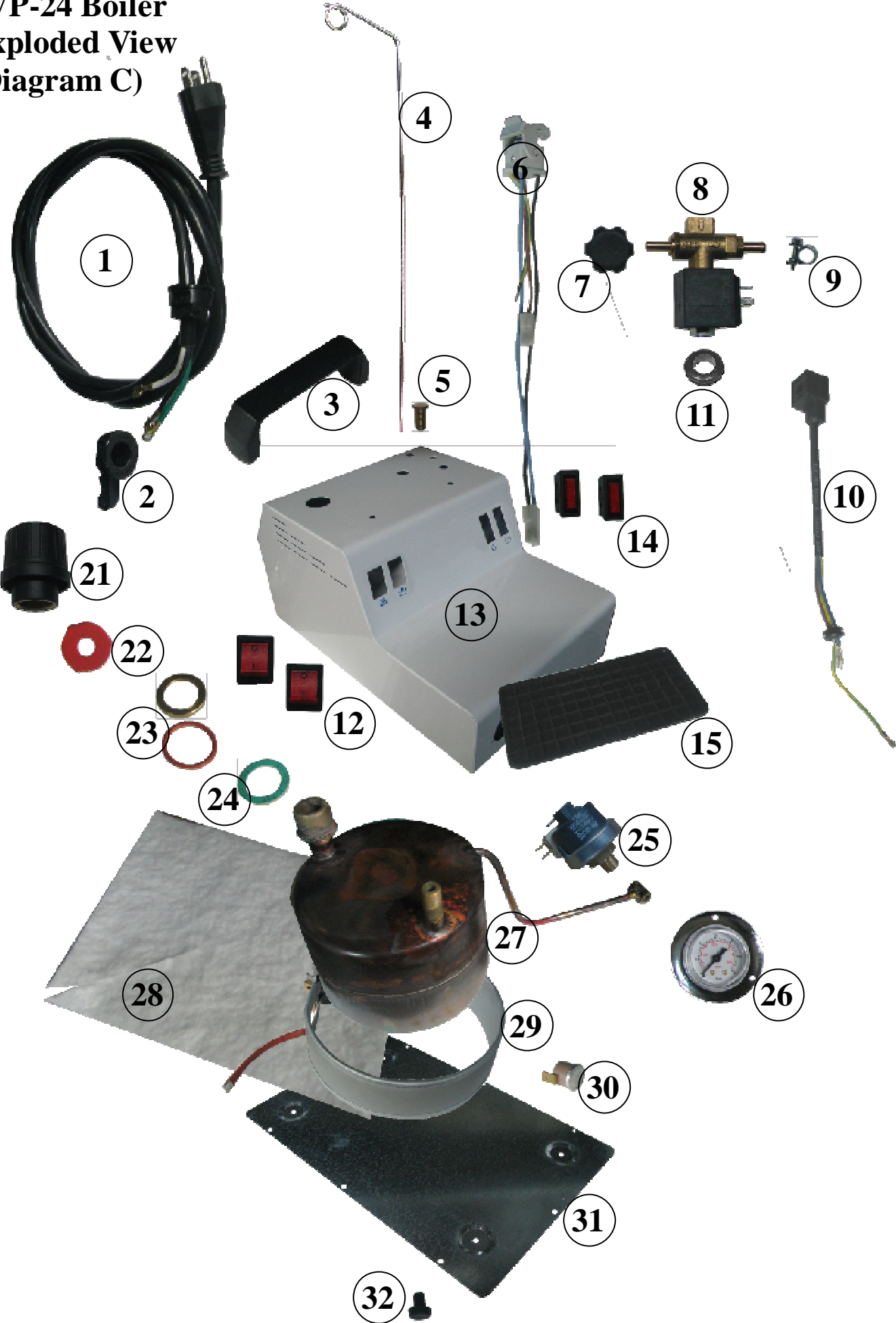


Diagram B



SVP-24 Boiler
Exploded View
(Diagram C)



SVP-24 Boiler Parts List (Diagram C)

Diagram #	Description	Part No.
1	Electric Cord for Boiler 120V	MVP044A
2	Rubber Grommet for Electric Cord	MVP044G
3	Handle for Boiler	MVP026
4	Cord Holder	MVP031
5	Brass Grommet for Cord Holder	MVP049
6	Grey Receptacle for Iron	MVP045
7	Knob for Solenoid Valve	MVP038
8	Complete Solenoid Valve 120V	MVP035
9	Hose Clamp	MVP014
10	Connector for Solenoid Valve	MVP036
11	Rubber Grommet for Solenoid Valve	MVP033
12	On/Off Switch	MVP015
13	Cabinet	MVP025-SVP
14	Boiler Ready Indicator Light	MVP016
15	Soft Silicone Iron Rest	SR2
21	Water Cap with 2 Extra Gaskets	MVP030
22	Gasket for Water Cap (Pack of 5)	MVP029S
23	Brass Ring with Silicone Packing	MVP028
24	Gasket Packing	MVP008
25	Pressure Switch	MVP006
26	Pressure Gauge	MVP053
27	Pressure Vessel	MVP005SVP
28	Insulation	MVP043A
29	Heating Element 120V	MVP004A
30	Thermostat for Boiler	MVP003
31	Base	MVP001A
32	Rubber Protector	MVP002

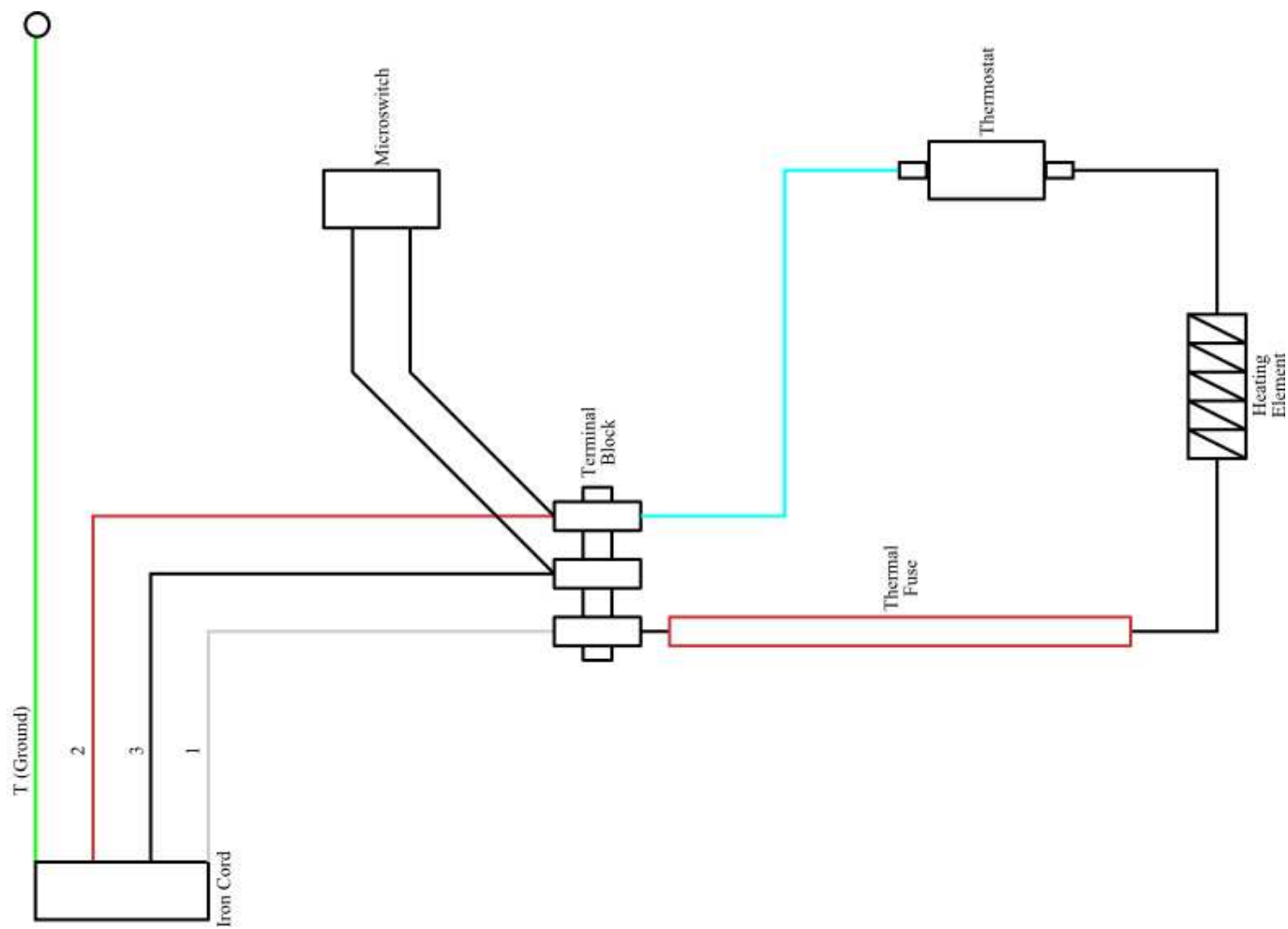
MV-3B Iron
Exploded View
(Diagram D)



MV-3B Iron Parts List (Diagram D)

Diagram #	Description	Part No.
1	Microswitch	MVP021
2	Microswitch Cover	MVP024
3	Iron Handle	MVP042
4	Terminal Block	MVP019
5	Back Terminal Cover	MVP017
6	Thermostat with Thermal Fuse	MVP013
7	Lead Wire-Thermostat to Terminal Block	MVP051
8	Iron Heating Element w/Base 120V	MVP010
9	Iron Cover	MVP023
10	Hand Guard for Iron	MVP037
11	Knob for Thermostat	MVP022
12	Hose Nipple	MVP009
13	Hose Clamp	MVP014
14	Rubber Steam Hose	MVP048
15	Iron Cord Supporter	MVP027
16	Electric Cord for Iron	MVP018
17	Grey Plug for Iron	MVP046

WIRING DIAGRAM "MV3" AND "MV-3B" IRON





LIMITED WARRANTY for

MINI BOILERS with IRON

Hi-Steam Mini Boilers with Iron are warranted by European Finishing Equipment Corp. ("European Finishing") to the original purchaser against defects in workmanship and material, for a period of (a) 12 months for heating elements and pressure vessels, and (b) 90 days for all other parts, in either case from the date of original purchase, with the following limitations:

- 1 This warranty is contingent upon compliance with the installation, operation and maintenance instructions contained in the equipment's instruction manual. The equipment is intended solely for industrial use.
- 2 This warranty is limited to repair or replacement of defective parts plus the cost of labor, and does not cover any shipping cost or other incidental costs.
- 3 This warranty is void for parts that are, in the sole judgment of European Finishing:
 - damaged from mishandling, faulty installation or adjustments, improper use or maintenance, corrosion, accident, negligence, not operating within the specifications provided, failure to follow instructions, use of improper voltage, etc.
 - damaged by causes beyond the control of European Finishing, such as fire, flood, earthquake, lightning, power surge, damage in shipping, etc.
 - altered or repaired in any way that changes the original design, construction, specifications or performance, or by replacing parts with unauthorized components.
 - expendable in the normal course of operation. Expendable items include, but are not limited to, the iron cords, hoses, gaskets, etc

The warranty period on each repaired or replacement part in fulfillment of this warranty shall be for the unexpired portion of the original warranty.

Defective equipment covered by this warranty must be shipped, freight prepaid, to one of European Finishing's designated repair shops for repair or for replacement of parts with new or refurbished parts. Repair or replacement of parts will be done at the discretion of the designated repair shop.

Replacement or repair of parts is the sole and exclusive remedy available under this warranty. EXCEPT AS STATED IN THIS LIMITED WARRANTY, THERE IS NO WARRANTY OF ANY KIND, EXPRESS OR IMPLIED, INCLUDING ANY WARRANTY OF MERCHANTABILITY OR FITNESS FOR A PARTICULAR PURPOSE, OR ANY OTHER WARRANTIES OTHERWISE ARISING BY OPERATION OF LAW, COURSE OF DEALING, CUSTOM, TRADE OR OTHERWISE.

In no event shall European Finishing be liable for any direct, indirect, consequential or incidental damages arising out of the use of or inability to use the equipment or parts, even if it could foresee or has been advised of the possibility of such damage.

For warranty service by one of the designated repair shops in your area, please contact:

European Finishing Equipment Corp.
901 Penhorn Avenue, Unit #2
Secaucus, N.J. 07094
(888) 460-9292

10/10/11



EUROPEAN FINISHING EQUIPMENT Corp.

901 PENHORN AVE., UNIT #2

SECAUCUS, NJ 07094

PHONE (201) 210-2247 FAX (201) 210-2549

sales@histeam.com www.histeam.com