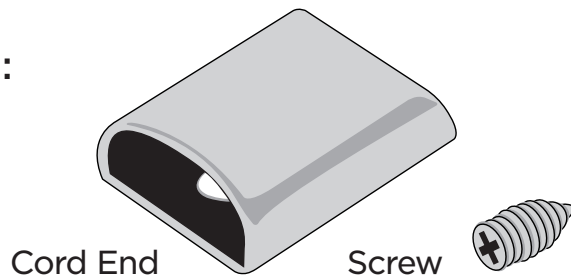




ZIPPER CORD ENDS INSTALLATION INSTRUCTIONS

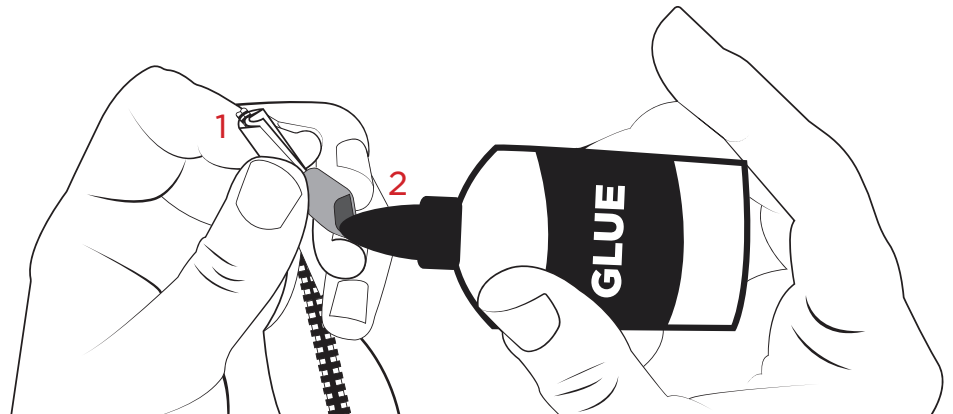
TOOLS YOU WILL NEED BEFORE GETTING STARTED:

1. Zipper cord end parts
(Cord end and Screw)
2. Glue
3. Screw Driver



STEP ONE:

1. Fold end of zipper to size
for the cord end hole.
2. Glue inside the cord end
for a more secure hold.



STEP TWO:

1. Slide the folded end of
the zipper into the glue
coated cord end hole.
2. Insert screw with
screw driver until tight
and secure.

