

**1500FR**

ELECTRIC CLOTH CUTTER

INSTRUCTION MANUAL

## CONGRATULATIONS

We would like to thank you, and congratulate you for purchasing the 1500FR octagonal cutting knife from Reliable.

The Reliable 1500FR can cut from a single ply of fabric right up to 1" thick, making it a very versatile, lightweight machine. Ideal for sample making or other light-duty operations.

For your safety and to fully enjoy the advantages of this product, please take a few minutes to read all of the important safeguards and care instructions. Keep this manual handy for your reference.

# INSTRUCTIONS

Before cutting, connect the power cord to the machine and sharpen the knife-edge by pushing the spring loaded projection-grinding switch (B) several times.

## A. Lubrication

1. Every 50 hours: Add a small quantity of grease through the grease cup and turn the cap (A) in.
2. Every 10-20 hours: Add oil to knife oiler (D) until oil comes in contact with the surface of the knife's edge.

## B. Adjusting the Sharpener

1. When the grinding wheel shows signs of wear, loosen the stop on the grinder arm (J) and adjust the sharpener's position so that the grinding wheel maintains proper contact with the knife-edge.

## C. Replacing the Grinding Wheel

\* See *Grinding Wheel Replacement Guide*

## D. Replacing the Knife

1. Place the knife guard (E) to its upward position.
2. Pull the spring-loaded knife oiler (D) and turn to the right to arrow indication.
3. Remove safety plate (I) releasing the lock nut (H).
4. Remove the knife lock nut (C) by turning it to the left with the knife removal key.
5. Remove the knife.
6. Be sure the front face of the blade is marked when replacing the knife.
7. Adjust the position of the sharpener (K) after each knife replacement.

## E. Replacement of Carbon Brush

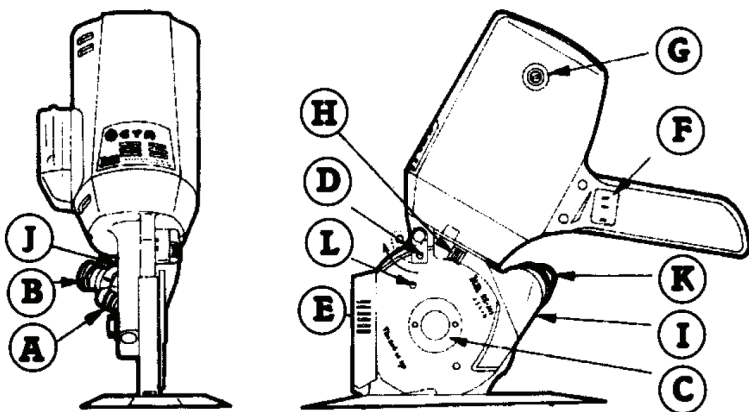
1. Excess wear of the carbon brush will cause motor trouble. Carbon brush must be replaced when it wears down to 5mm.
2. Remove the carbon brush cap (G) to replace the carbon brush.
3. Always replace right and left carbon brushes simultaneously.

**CAUTION:** For safety purposes retain the knife guards (E) at the lowest possible location while the machine is not in use. Also keep the guard as close as possible to the fabric while cutting.

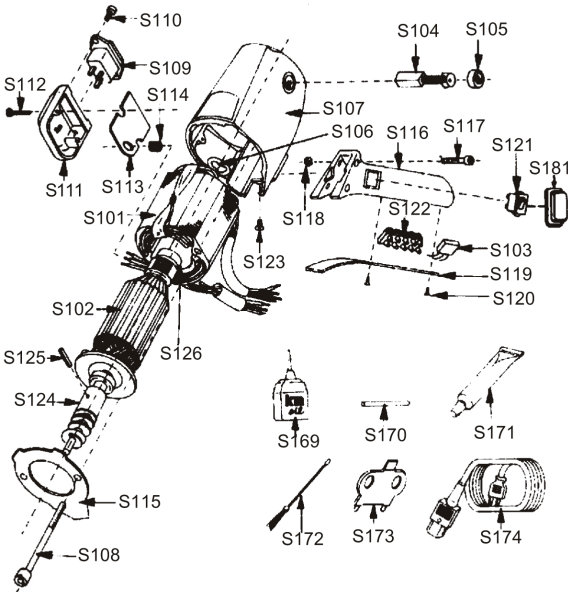
# SPECIFICATIONS

|                   |  |
|-------------------|--|
| KNIFE SIZE        | 100MM                                  |
| KNIFE SHAPE:      | OCTAGON                                |
| CUTTING CAPACITY: | 25MM (1")                              |
| NET WEIGHT:       | 2.9KGS                                 |
| VOLTAGE:          | SINGLE PHASE 100V - 120V / 220V - 240V |
| POWER:            | 100W                                   |

## OPERATION - LUBRICATION CARE



# MOTOR ASSEMBLY & ACCESSORIES



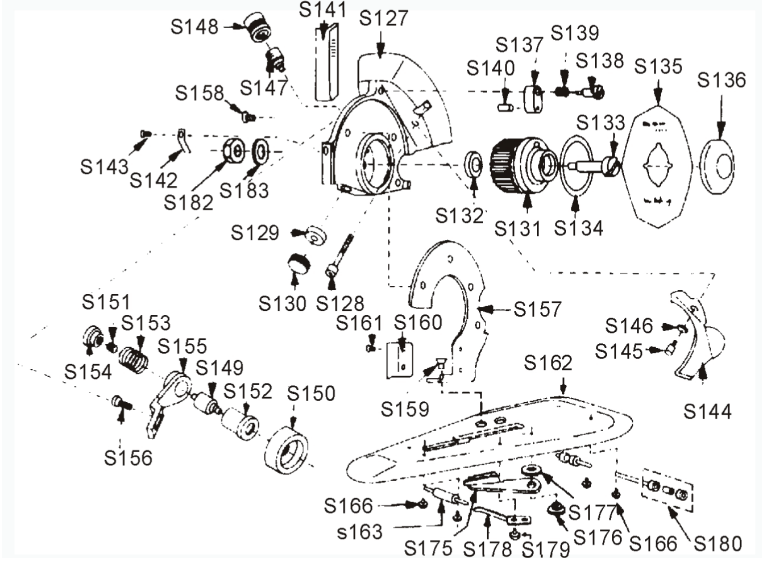
## OTHER STANDARD ACCESSORIES:

- KNIFE (S135) - 1 PC.
- CARBON BRUSH (S104) - 1 SET
- GRINDING WHEEL (S150) - 1 PC.
- KNIFE OIL FELT (S140) - 1 PC.

|       |                      |
|-------|----------------------|
| S-101 | STATOR               |
| S-102 | ROTOR                |
| S-103 | CONDENSER            |
| S-104 | CARBON BRUSH         |
| S-105 | CAP FOR CARBON BRUSH |
| S-106 | WAVE WASHER          |
| S-107 | MOTOR COVER          |
| S-108 | SCREW FOR STATOR     |
| S-109 | TERMINAL             |
| S-110 | SCREW FOR TERMINAL   |
| S-111 | TERMINAL BOX         |
| S-112 | SCREW FOR T.BOX      |
| S-113 | TERMINAL PLATE       |
| S-114 | RUBBER BUSHING       |
| S-115 | AIR GUIDE            |
| S-116 | DRIVE HANDLE         |
| S-117 | SCREW FOR HANDLE     |
| S-118 | NUT FOR HANDLE       |
| S-119 | COVER FOR HANDLE     |
| S-120 | SCREW FOR COVER      |
| S-121 | SWITCH               |

|       |                     |
|-------|---------------------|
| S-122 | CONNECTING TERMINAL |
| S-123 | GROUND SCREW        |
| S-124 | DRIVE GEAR          |
| S-125 | ROLL PIN            |
| S-126 | BEARING             |
| S-127 | GEAR BOX            |
| S-128 | SCREW FOR G.BOX     |
| S-129 | DRIVE GEAR METAL    |
| S-130 | COVER FOR METAL     |
| S-131 | KNIFE GEAR          |
| S-132 | WASHER FOR GEAR     |
| S-133 | SCREW FOR GEAR      |
| S-134 | RING FOR GEAR       |
| S-135 | KNIFE (8-SIDED)     |
| S-136 | LOCK NUT FOR KNIFE  |
| S-137 | KNIFE OILER         |
| S-138 | SCREW FOR OILER     |
| S-139 | SPRING FOR OILER    |
| S-140 | OIL FELT            |
| S-141 | KNIFE GUARD         |
| S-142 | SPRING FOR GUARD    |

# STANDARD & BASE ASSEMBLY

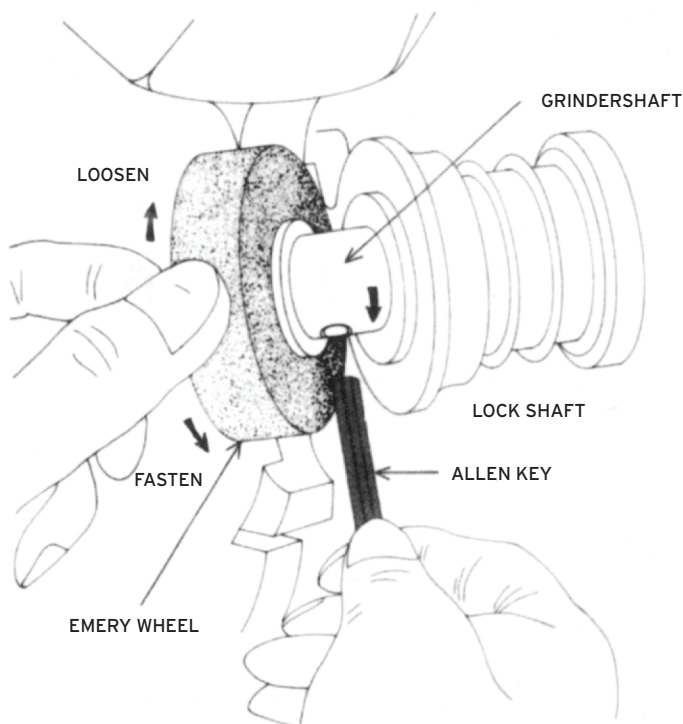


|       |                             |
|-------|-----------------------------|
| S-143 | SCREW FOR SPRING            |
| S-144 | SAFETY PLATE                |
| S-145 | SCREW FOR PLATE             |
| S-146 | SPRING WASHER FOR PLATE     |
| S-147 | GREASE CUP                  |
| S-148 | CAP FOR GREASE CUP          |
| S-149 | GRINDER SHAFT               |
| S-150 | EMERY WHEEL                 |
| S-151 | GRINDER SPRING              |
| S-152 | GRINDER COLLAR              |
| S-153 | SPRING FOR COLLAR           |
| S-154 | SHARPENING SWITCH           |
| S-155 | GRINDER ARM                 |
| S-156 | SCREW FOR GRINDER ARM       |
| S-157 | STANDARD                    |
| S-158 | SCREW FOR STANDARD (UPSIDE) |
| S-159 | SCREW FOR STANDAD(BOTTOM)   |
| S-160 | GUIDE PLATE                 |
| S-161 | SCREW FOR GUIDE PLATE       |
| S-162 | BASE PLATE                  |

|       |                                 |
|-------|---------------------------------|
| S-163 | FRONT ROLLER                    |
| S-164 | ROLLER SHAFT (FRONT)            |
| S-165 | ROLLER SHAFT(REAR)              |
| S-166 | SCREW FOR ROLLER SHAFT          |
| S-169 | OILER                           |
| S-170 | LOCK SHAFT                      |
| S-171 | GREASE                          |
| S-172 | CLEANING BRUSH                  |
| S-173 | WRENCH                          |
| S-174 | CODE COMPLETE WITH EARTH        |
| S-175 | LOWER BLADE                     |
| S-176 | SCREW FOR LOWER BLADE           |
| S-177 | WASHER FOR LOWER BLADE          |
| S-178 | PRESSURE SPRING FOE LOWER BLADE |
| S-179 | SCREW FOR PRESSURE SPRING       |
| S-180 | REAR ROLLER SET                 |
| S-181 | SWITCH CAP                      |
| S-182 | NUT FOR KNIFE GEAR SCREW        |
| S-183 | WASHER FOR KNIFE GEAR SCREW     |

# GRINDING WHEEL REPLACEMENT GUIDE

Hold the grinding wheel by hand. Insert the attached lock shaft to the hole provided in the grinder shaft and turn to arrow indication. Remove used wheel and replace with a new one.



# RELIABLE PRODUCTS WARRANTY

---



Reliable Corporation ("Reliable") warrants to original purchaser of its products that every product sold by Reliable (a "Reliable Product") is free from defects in material and workmanship for a period of one year from the date of purchase if properly used and maintained. Subject to the conditions and limitations set forth below, Reliable will either repair or replace any part of a Reliable Product that proves defective by reason of improper workmanship or materials. If the defective Reliable Product is no longer available and cannot be repaired effectively or replaced with an identical model, Reliable shall replace the defective Reliable Product with a current Reliable Product of equal or greater value. Repaired parts or replacement products will be provided by Reliable on an exchange basis, and will be either new or refurbished to be functionally equivalent to new. If Reliable is unable to repair or replace a Reliable Product, it will refund the current value of that Reliable Product at the time the warranty claim is made.

This limited warranty does not cover any damage to a Reliable Product that results from improper installation, accident, abuse, misuse, natural disaster, insufficient or excessive electrical supply, abnormal mechanical or environmental conditions, wear and tear resulting from normal use of the product, or any unauthorized disassembly, repair, or modification. This limited warranty does not extend to any indirect, consequential or incidental damages that may be suffered by a user or from the use of a Reliable Product, including without limitation, any liability for third party claims for damage, and is limited to the amount paid by the original purchaser Reliable Product with respect to which this limited warranty protection applies. This limited warranty does not apply with respect to products that have been altered or which are missing serial numbers or for products not purchased directly from Reliable or a dealer authorized by us to sell Reliable Products.

This limited warranty is the only warranty that applies to any Reliable Product, supersedes any and all terms that may be contained in any other document or purchase order and may not be altered or amended except expressly in writing by Reliable.

To obtain a repair or replacement under the terms of this warranty, please contact our customer service group at 1-800-268-1649 or at [support@reliablecorporation.com](mailto:support@reliablecorporation.com). You will be required to submit an original receipt via fax or e-mail. The receipt must reflect that you are the original purchaser, the product was bought directly from us or from an authorized Reliable dealer and that the warranty claim is being made within the warranty period. You will be issued a return authorization number (RA#) and asked to ship the defective product together with proof of purchase and RA#, prepaid insured to the following address:

Reliable Corporation, 5-100 Wingold Avenue, Toronto, ON M6B 4K7. Freight collect shipments will be refused. The risk of loss or damage in transit will be borne by the customer. Once Reliable receives the defective product, it will initiate the repair or replacement process.

If you have any questions regarding this warranty, you may write to:

Reliable Corporation  
100 Wingold Avenue, Unit 5  
Toronto, Ontario  
Canada M6B 4K7  
[www.reliablecorporation.com](http://www.reliablecorporation.com)







1 800 268 1649  
[www.reliablecorporation.com](http://www.reliablecorporation.com)