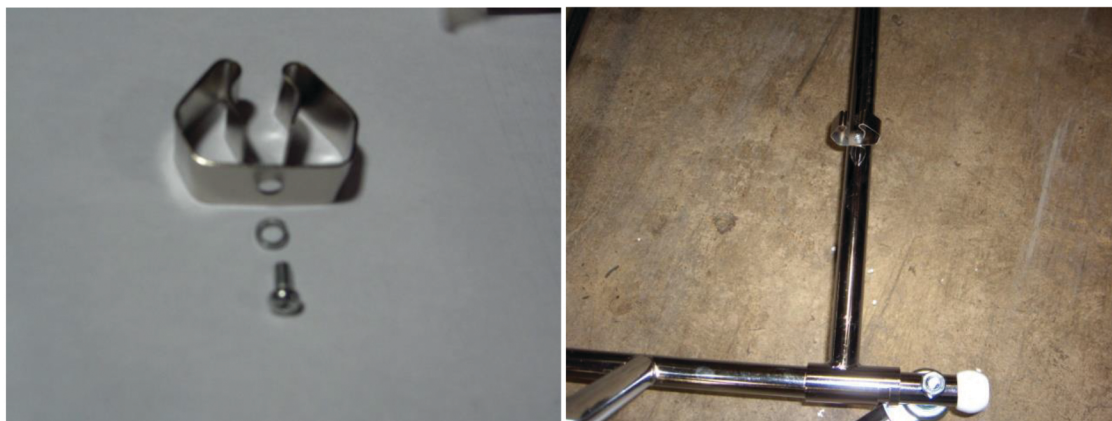


# Rolling Rack C-Clamp Instructions



The 2 clamps that come with the RA-10 (4 with the RA-21) screw into the bottom rail(s) to hold the top bar when storing these racks.



1. Place the clamp bracket over the pre-drilled hole.
2. Put the lock washer on the screw and insert through the hole and tighten.
3. Secure top bar into clamps for storage after rack has been collapsed.